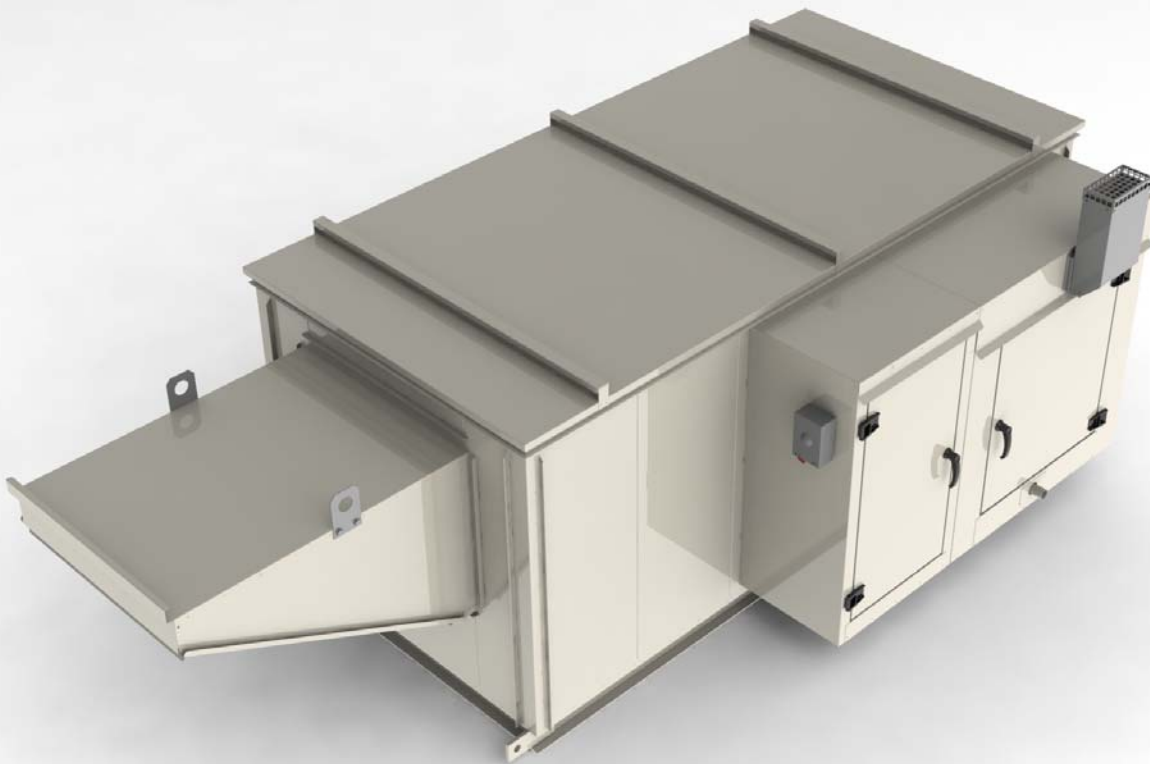


INDIRECT GAS-FIRED AIR HEATER



BC(HM) SERIES
INDOOR/OUTDOOR



SPECIFICATIONS MANUAL

MANUFACTURED BY
BOUSQUET
Technologies

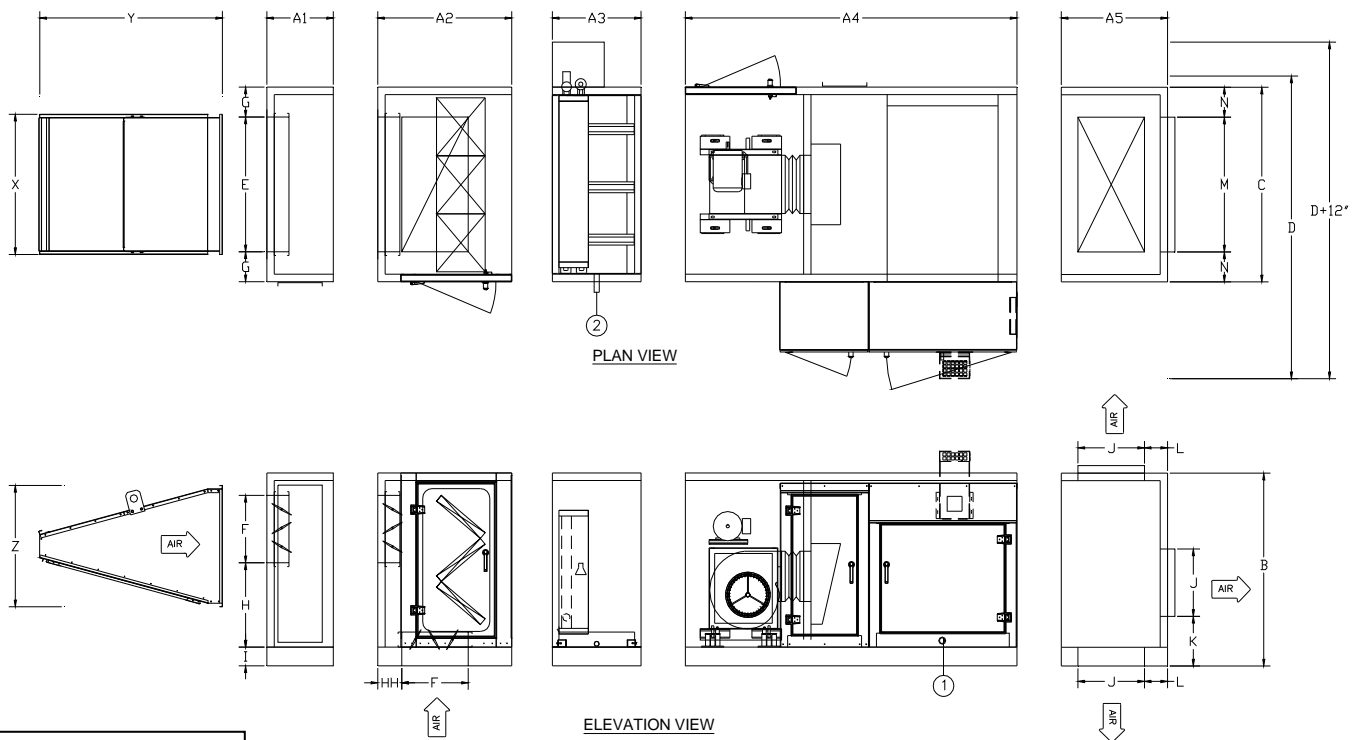
SELECTION TABLE

TEMPERATURE RISE (FROM 90 TO 120°F)

(2) HEAT EXCHANGERS IN SERIES

| MODEL BC | ΔT (°F) | AIR FLOW (SCFM) | FAN | WITHOUT COOLING MOTOR (HP) EXTERNAL STATIC PRESSURE (E.S.P.) | | | | | WITH COOLING MOTOR (HP) EXTERNAL STATIC PRESSURE (E.S.P.) | | | | |
|----------------|---------|-----------------|-------|---|-------|-------|-------|-----|--|------|-------|-------|-------|
| | | | | 0.5 | 0.75 | 1.0 | 1.25 | 1.5 | 0.5 | 0.75 | 1.0 | 1.25 | 1.5 |
| 2HM-200 | 120 | 2469 | 10-10 | 1-1/2 | 1-1/2 | 1-1/2 | 1-1/2 | 2 | 1-1/2 | 2 | 2 | 2 | 2 |
| | 110 | 2694 | 10-10 | 1-1/2 | 1-1/2 | 1-1/2 | 2 | 2 | 2 | 2 | 2 | 3 | 3 |
| | 100 | 2963 | 10-10 | 1-1/2 | 2 | 2 | 2 | 3 | 2 | 2 | 3 | 3 | 3 |
| | 90 | 3292 | 10-10 | 2 | 3 | 3 | 3 | 3 | 3 | 3 | 3 | 3 | 3 |
| 2HM-250 | 120 | 3086 | 12-12 | 1-1/2 | 1-1/2 | 2 | 2 | 3 | 2 | 2 | 2 | 3 | 3 |
| | 110 | 3367 | 12-12 | 1-1/2 | 2 | 2 | 3 | 3 | 2 | 3 | 3 | 3 | 3 |
| | 100 | 3704 | 12-12 | 2 | 2 | 3 | 3 | 3 | 3 | 3 | 3 | 3 | 5 |
| | 90 | 4115 | 12-12 | 3 | 3 | 3 | 3 | 5 | 3 | 3 | 5 | 5 | 5 |
| 2HM-300 | 120 | 3704 | 15-11 | 1-1/2 | 2 | 2 | 3 | 3 | 2 | 3 | 3 | 3 | 3 |
| | 110 | 4040 | 15-11 | 2 | 2 | 3 | 3 | 3 | 3 | 3 | 3 | 3 | 5 |
| | 100 | 4445 | 15-11 | 3 | 3 | 3 | 3 | 3 | 3 | 3 | 5 | 5 | 5 |
| | 90 | 4938 | 15-11 | 3 | 3 | 5 | 5 | 5 | 5 | 5 | 5 | 5 | 5 |
| 2HM-350 | 120 | 4321 | 15-11 | 2 | 3 | 3 | 3 | 3 | 3 | 3 | 3 | 5 | 5 |
| | 110 | 4714 | 15-11 | 3 | 3 | 3 | 3 | 5 | 3 | 5 | 5 | 5 | 5 |
| | 100 | 5185 | 15-11 | 3 | 3 | 5 | 5 | 5 | 5 | 5 | 5 | 5 | 5 |
| | 90 | 5761 | 15-11 | 5 | 5 | 5 | 5 | 5 | 5 | 5 | 5 | 5 | 7-1/2 |
| 2HM-400 | 120 | 4938 | 15-15 | 3 | 3 | 3 | 3 | 5 | 3 | 5 | 5 | 5 | 5 |
| | 110 | 5387 | 15-15 | 3 | 3 | 5 | 5 | 5 | 5 | 5 | 5 | 5 | 5 |
| | 100 | 5926 | 15-15 | 3 | 5 | 5 | 5 | 5 | 5 | 5 | 5 | 5 | 5 |
| | 90 | 6584 | 15-15 | 5 | 5 | 5 | 5 | 5 | 5 | 5 | 7-1/2 | 7-1/2 | 7-1/2 |

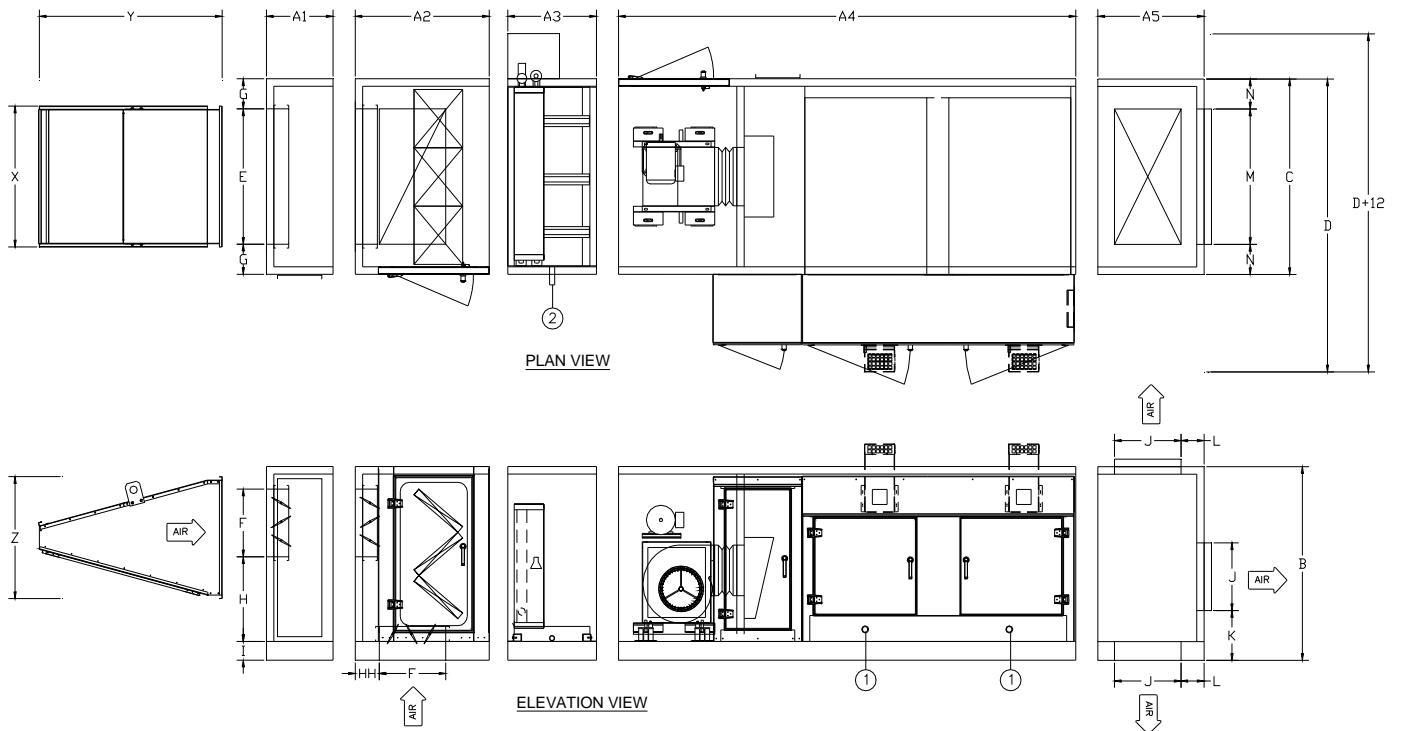
DIMENSIONS OF BC-HM-200 @ 400 MODELS



1 - GAS INLET: DIA. 3/4"
2 - DRAIN : 1" N.P.T.

| | BC-HM-200 | | BC-HM-250 | | BC-HM-300 | | BC-HM-350 | | BC-HM-400 | |
|-----------------|--------------------|------------------------|--------------------|------------------------|--------------------|------------------------|--------------------|------------------------|--------------------|------------------------|
| | in | mm | in | mm | in | mm | in | mm | in | mm |
| FILTERS | 1-12x24 1-24x24 | 1-305X610 1-610X610 | 2-12x24 2-24x24 | 2-305X610 2-305X610 | 2-12x24 2-24x24 | 2-305X610 2-305X610 | 2-12x24 2-24x24 | 2-305X610 2-305X610 | 2-12x24 2-24x24 | 2-305X610 2-305X610 |
| A1 | 18 | 457 | 18 | 457 | 18 | 457 | 18 | 457 | 18 | 457 |
| A2 | 30 | 762 | 36 | 915 | 36 | 915 | 42 | 1067 | 42 | 1067 |
| A3 [3 @ 6 rows] | 18 | 457 | 18 | 457 | 18 | 457 | 18 | 457 | 18 | 457 |
| A3 [8 rows] | 24 | 610 | 24 | 610 | 24 | 610 | 24 | 610 | 24 | 610 |
| A4 | 102-1/2 | 2604 | 102-1/2 | 2604 | 102-1/2 | 2604 | 108-1/2 | 2756 | 108-1/2 | 2756 |
| A5 | 24 | 610 | 24 | 610 | 30 | 762 | 30 | 762 | 36 | 915 |
| B [with A3] | 42 | 1067 | 49 | 1245 | 49 | 1245 | 62 | 1575 | 62 | 1575 |
| B [without A3] | 42 | 1067 | 42 | 1067 | 49 | 1245 | 49 | 1245 | 49 | 1245 |
| C | 52 | 1321 | 52 | 1321 | 52 | 1321 | 52 | 1321 | 52 | 1321 |
| D | 78 | 1981 | 78 | 1981 | 78 | 1981 | 78 | 1981 | 78 | 1981 |
| E | 36 | 915 | 36 | 915 | 36 | 915 | 36 | 915 | 36 | 915 |
| F | 12 | 305 | 18 | 457 | 18 | 457 | 24 | 610 | 24 | 610 |
| G | 8 | 203 | 8 | 203 | 8 | 203 | 8 | 203 | 8 | 203 |
| H | 20 | 508 | 14 | 356 | 21 | 533 | 15 | 381 | 15 | 381 |
| HH | 6 | 152 | 6 | 152 | 6 | 152 | 6 | 152 | 6 | 152 |
| I | 4 | 102 | 4 | 102 | 4 | 102 | 4 | 102 | 4 | 102 |
| J | 12 | 305 | 12 | 305 | 18 | 457 | 18 | 457 | 24 | 610 |
| K | 10 | 254 | 10 | 254 | 10 | 254 | 10 | 254 | 10 | 254 |
| L | 6 | 152 | 6 | 152 | 6 | 152 | 6 | 152 | 6 | 152 |
| M | 36 | 915 | 36 | 915 | 36 | 915 | 36 | 915 | 36 | 915 |
| N | 8 | 203 | 8 | 203 | 8 | 203 | 8 | 203 | 8 | 203 |
| X | 37-3/4 | 957 | 37-1/2 | 952 | 37-1/2 | 952 | 37-1/2 | 952 | 37-1/2 | 952 |
| Y | 27 | 686 | 49-3/4 | 1262 | 49-3/4 | 1262 | 49-3/4 | 1262 | 49-3/4 | 1262 |
| Z | 20-1/4 | 515 | 32-1/2 | 824 | 32-1/2 | 824 | 32-1/2 | 824 | 32-1/2 | 824 |

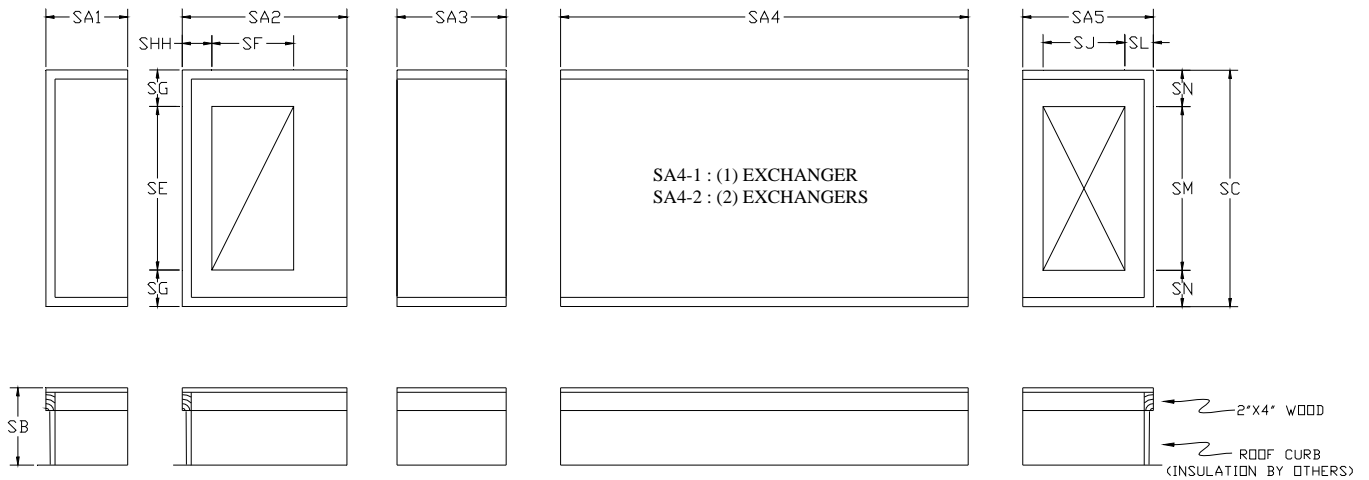
DIMENSIONS OF BC-2HM-200 @ 400 MODELS



1 - GAS INLET: DIA. 3/4" (2)
2 - DRAIN: 1" N.P.T.

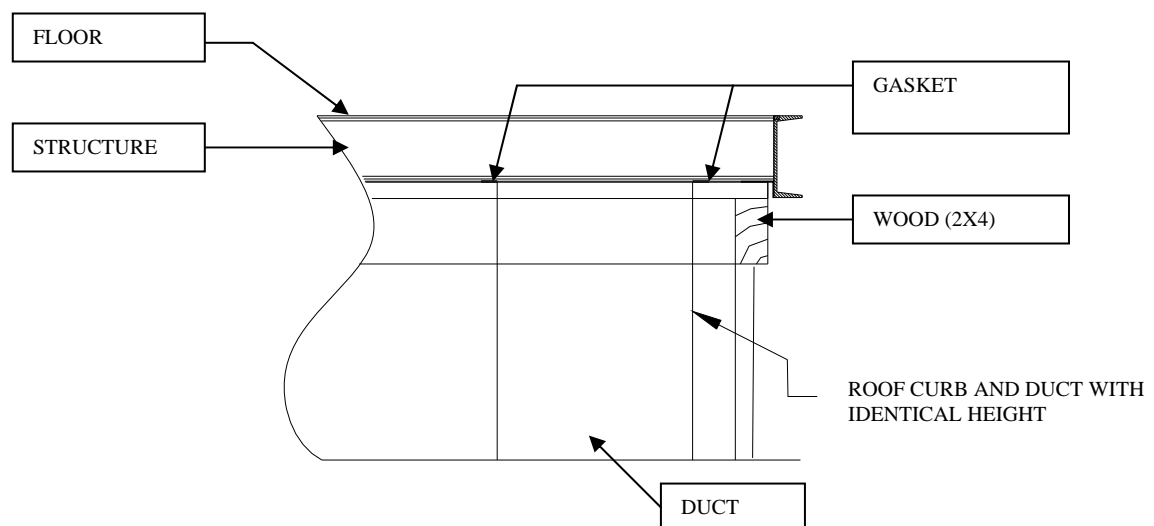
| | BC-2HM-200 | | BC-2HM-250 | | BC-2HM-300 | | BC-2HM-350 | | BC-2HM-400 | |
|-----------------|--------------------|------------------------|--------------------|------------------------|--------------------|------------------------|--------------------|------------------------|--------------------|------------------------|
| | in | mm | in | mm | in | mm | in | mm | in | mm |
| FILTERS | 1-12x24 1-24x24 | 1-305X610 1-610X610 | 2-12x24 2-24x24 | 2-305X610 2-305X610 | 2-12x24 2-24x24 | 2-305X610 2-305X610 | 2-12x24 2-24x24 | 2-305X610 2-305X610 | 2-12x24 2-24x24 | 2-305X610 2-305X610 |
| A1 | 18 | 457 | 18 | 457 | 18 | 457 | 18 | 457 | 18 | 457 |
| A2 | 30 | 762 | 36 | 915 | 36 | 915 | 42 | 1067 | 42 | 1067 |
| A3 [3 @ 6 rows] | 18 | 457 | 18 | 457 | 18 | 457 | 18 | 457 | 18 | 457 |
| A3 [8 rows] | 24 | 610 | 24 | 610 | 24 | 610 | 24 | 610 | 24 | 610 |
| A4 | 132-1/2 | 3366 | 138-1/2 | 3518 | 138-1/2 | 3518 | 138-1/2 | 3518 | 138-1/2 | 3518 |
| A5 | 24 | 610 | 24 | 610 | 30 | 762 | 30 | 762 | 36 | 915 |
| B [with A3] | 42 | 1067 | 49 | 1245 | 49 | 1245 | 62 | 1575 | 62 | 1575 |
| B [without A3] | 42 | 1067 | 42 | 1067 | 49 | 1245 | 49 | 1245 | 49 | 1245 |
| C | 52 | 1321 | 52 | 1321 | 52 | 1321 | 52 | 1321 | 52 | 1321 |
| D | 78 | 1981 | 78 | 1981 | 78 | 1981 | 78 | 1981 | 78 | 1981 |
| E | 36 | 915 | 36 | 915 | 36 | 915 | 36 | 915 | 36 | 915 |
| F | 12 | 305 | 18 | 457 | 18 | 457 | 24 | 610 | 24 | 610 |
| G | 8 | 203 | 8 | 203 | 8 | 203 | 8 | 203 | 8 | 203 |
| H | 20 | 508 | 14 | 356 | 21 | 533 | 15 | 381 | 15 | 381 |
| HH | 6 | 152 | 6 | 152 | 6 | 152 | 6 | 152 | 6 | 152 |
| I | 4 | 102 | 4 | 102 | 4 | 102 | 4 | 102 | 4 | 102 |
| J | 12 | 305 | 12 | 305 | 18 | 457 | 18 | 457 | 24 | 610 |
| K | 10 | 254 | 10 | 254 | 10 | 254 | 10 | 254 | 10 | 254 |
| L | 6 | 152 | 6 | 152 | 6 | 152 | 6 | 152 | 6 | 152 |
| M | 36 | 915 | 36 | 915 | 36 | 915 | 36 | 915 | 36 | 915 |
| N | 8 | 203 | 8 | 203 | 8 | 203 | 8 | 203 | 8 | 203 |
| X | 37-3/4 | 957 | 37-1/2 | 952 | 37-1/2 | 952 | 37-1/2 | 952 | 37-1/2 | 952 |
| Y | 27 | 686 | 49-3/4 | 1262 | 49-3/4 | 1262 | 49-3/4 | 1262 | 49-3/4 | 1262 |
| Z | 20-1/4 | 515 | 32-1/2 | 824 | 32-1/2 | 824 | 32-1/2 | 824 | 32-1/2 | 824 |

ROOF CURBS



| | BC-HM-200 | | BC-HM-250 | | BC-HM-300 | | BC-HM-350 | | BC-HM-400 | |
|-----------------|-----------|------|-----------|------|-----------|------|-----------|------|-----------|------|
| | in | mm | in | mm | in | mm | in | mm | in | mm |
| SA1 | 15-1/2 | 394 | 15-1/2 | 394 | 15-1/2 | 394 | 15-1/2 | 394 | 15-1/2 | 394 |
| SA2 | 27-1/2 | 699 | 33-1/2 | 851 | 33-1/2 | 851 | 39-1/2 | 1003 | 39-1/2 | 1003 |
| SA3 3@6 ROWS | 18 | 457 | 18 | 457 | 18 | 457 | 18 | 457 | 18 | 457 |
| SA3 8 ROWS | 24 | 610 | 24 | 610 | 24 | 610 | 24 | 610 | 24 | 610 |
| SA4-1 | 100 | 2540 | 100 | 2540 | 100 | 2540 | 106 | 2692 | 106 | 2692 |
| SA4-2 | 130 | 3302 | 136 | 3454 | 136 | 3454 | 136 | 3454 | 136 | 3454 |
| SA5 | 24 | 610 | 24 | 610 | 30 | 762 | 30 | 762 | 36 | 915 |
| SB | 17 | 432 | 17 | 432 | 17 | 432 | 17 | 432 | 17 | 432 |
| SC | 47 | 1194 | 47 | 1194 | 47 | 1194 | 47 | 1194 | 47 | 1194 |
| SE | 36 | 915 | 36 | 915 | 36 | 915 | 36 | 915 | 36 | 915 |
| SF | 12 | 305 | 18 | 457 | 18 | 457 | 24 | 610 | 24 | 610 |
| SG | 5-1/2 | 140 | 5-1/2 | 140 | 5-1/2 | 140 | 5-1/2 | 140 | 5-1/2 | 140 |
| SHH | 3-3/4 | 92 | 3-3/4 | 92 | 3-3/4 | 92 | 3-3/4 | 92 | 3-3/4 | 92 |
| SJ | 12 | 305 | 12 | 305 | 18 | 457 | 18 | 457 | 24 | 610 |
| SL | 3-3/4 | 92 | 3-3/4 | 92 | 3-3/4 | 92 | 3-3/4 | 92 | 3-3/4 | 92 |
| SM | 36 | 915 | 36 | 915 | 36 | 915 | 36 | 915 | 36 | 915 |
| SN | 5-1/2 | 140 | 5-1/2 | 140 | 5-1/2 | 140 | 5-1/2 | 140 | 5-1/2 | 140 |

DETAIL OF ASSEMBLY



ROOF CURB'S ELEVATION VIEW

WEIGHT TABLE

(UNIT)

| | BC-HM-200 | | BC-HM-250 | | BC-HM-300 | | BC-HM-350 | | BC-HM-400 | |
|-----------------|-----------|-----|-----------|-----|-----------|-----|-----------|-----|-----------|-----|
| | lbs | kg | lbs | kg | lbs | kg | lbs | kg | lbs | Kg |
| SA1 | 101 | 46 | 101 | 46 | 106 | 48 | 106 | 48 | 106 | 48 |
| SA2 | 168 | 76 | 201 | 91 | 212 | 96 | 247 | 112 | 247 | 112 |
| SA3 3@6 ROWS | 101 | 46 | 101 | 46 | 106 | 48 | 106 | 48 | 106 | 48 |
| SA3 8 ROWS | 134 | 61 | 134 | 61 | 141 | 64 | 141 | 64 | 141 | 64 |
| SA4-1 | 1103 | 500 | 1191 | 540 | 1298 | 589 | 1393 | 632 | 1408 | 639 |
| SA4-2 | 1530 | 694 | 1706 | 774 | 1878 | 852 | 1996 | 905 | 2026 | 919 |
| SA5 | 134 | 61 | 134 | 61 | 177 | 80 | 177 | 80 | 212 | 96 |

(ROOF CURB)

| | BC-HM-200 | | BC-HM-250 | | BC-HM-300 | | BC-HM-350 | | BC-HM-400 | |
|-----------------|-----------|----|-----------|----|-----------|----|-----------|----|-----------|----|
| | lbs | kg | lbs | kg | lbs | kg | lbs | kg | lbs | Kg |
| SA1 | 35 | 16 | 35 | 16 | 35 | 16 | 35 | 16 | 35 | 16 |
| SA2 | 46 | 21 | 51 | 23 | 51 | 23 | 57 | 26 | 57 | 26 |
| SA3 3@6 ROWS | 17 | 8 | 17 | 8 | 17 | 8 | 17 | 8 | 17 | 8 |
| SA3 8 ROWS | 22 | 10 | 22 | 10 | 22 | 10 | 22 | 10 | 22 | 10 |
| SA4-1 | 110 | 50 | 110 | 50 | 110 | 50 | 115 | 52 | 115 | 52 |
| SA4-2 | 137 | 62 | 142 | 65 | 142 | 65 | 142 | 65 | 142 | 65 |
| SA5 | 22 | 10 | 22 | 10 | 27 | 12 | 27 | 12 | 32 | 15 |